

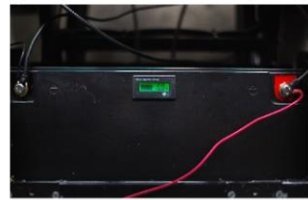


## Specifications:

- Motor: 36V/1.2Kw
- Battery: 36V50AH (LiFePo2 Lithium Iron phosphate Battery)
- Size mm (H x L x W): 1885 x 1830 x 900
- Weight kg: 202
- Max. forward speed: 13km/h
- Brake type: Hydraulic drum brake
- Traveling distance per a fully charge: 50km
- Charging time: 10hrs
- Climbing capacity: 30%

## Key Features:

- Eco-friendly electric cart.
- The battery indicator tells you the remaining balance.
- A better battery life cycle and minimal degradation compared to other types of battery
- 3.2m turning radius with rack and pinion steering.
- Light weight reduces the damages on turf.
- More personal space and flexibility of your ride.
- Stable yet comfortable ride by superior suspension system



# Single Seater Cart

by Amprex E Power Sdn. Bhd.

Amprex E Power Sdn .Bhd.  
E-3A-05, Block E, Phileo Damansara 1  
Jalan 16/11, Off Jalan Damansara  
46350 Petaling Jaya, Selangor  
Tel: 03-7932-5537  
[www.amprexpower.com](http://www.amprexpower.com)